

TILE WAREHOUSE

ALPINE

plus

QUALITY FLOORING

Now with 5G



Technically Advanced Acoustic Flooring System
WATER-RESISTANT. DURABLE. QUALITY.

ALPINE Plus Stone Composite Flooring provides exceptional durability, stability, and impact resistance.

Get the look and feel of **timber** without the susceptibility to water, resealing and maintenance programmes. Floors should be made to last.

Our proven ALPINE Plus flooring provides the warmth of timber with the durability of stone. An innovative click-together system alongside the pre-applied acoustic layer, allows for quick and easy installation.



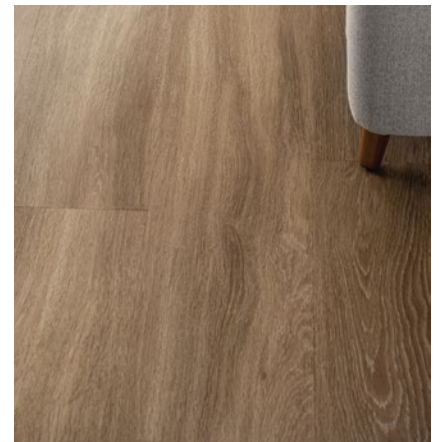
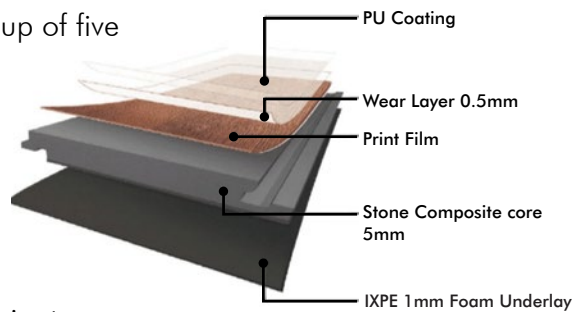
Warmth of timber. Durability of stone. ACOUSTIC OVERLAY FLOORING SYSTEM

$\Delta LW - 21db$



The ALPINE Plus Advantage: COMPOSITION

ALPINE Plus planks are made up of five distinct layers, each working in partnership to create a floor that will stand up to the tough demands of life. These layers are bonded together in a one-step heat fusion process, not glued, so they won't delaminate.



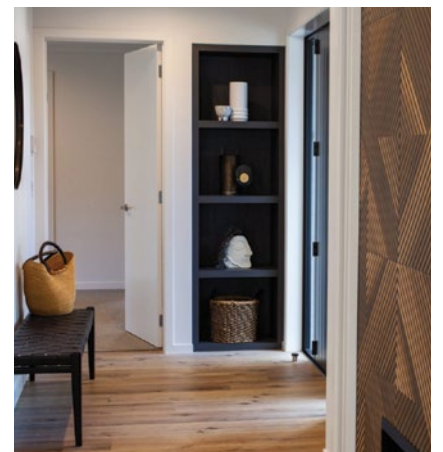
ALPINE Plus is suitable for kitchens under Tile Warehouses alternative solution regarding the E3/AS1 Building code. To contain any water overflows it is important to ensure water can be contained with:

- a sink overflow sufficient to drain maximum tap outflows
- a drip tray under the dishwasher drained to waste
- a drip tray under plumbed in fridges drained to waste

ALPINE Plus is water resistant and not a waterproof system. In Bathrooms, Laundries and Toilets we recommend the use of Porcelain tiles and waterproof membrane as an acceptable solution by Council.

The safest waterproof system for immersion-prone wet areas in your home is a compliant waterproof membrane encapsulated by tiles in accordance with the NZ Building code.

ALPINE Plus and similar synthetic products including timber flooring are prone to fading and movement. Therefore, we recommend the use of porcelain timber or large module tiles in areas of high sun and temperatures that exceed 60°C.



THE ALPINE PLUS RANGE

Plank Size: 230x1524x6.5mm



ALPINE Plus
American Oak



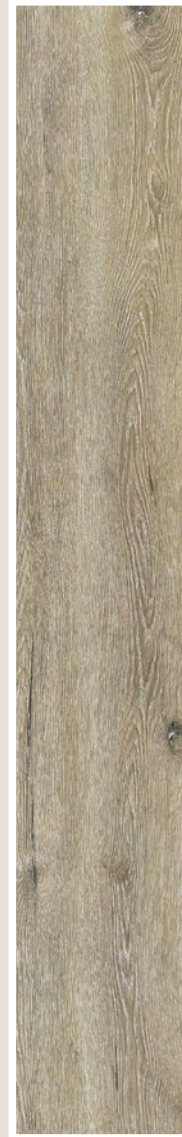
ALPINE Plus
Californian Oak



ALPINE Plus
European Oak



ALPINE Plus
Spotted Gum



ALPINE Plus
Letaba Wood



ALPINE Plus
Tasmanian Oak

We have the full ALPINE Plus system ready for installation with accompanying trims in various colour options available!



ALPINE Plus Plank End Trim



ALPINE Plus Stair Trim

10 Year Warranty

Authentic Oak design



ALPINE Plus
Blackbutt



ALPINE Plus
Black Roasted Oak



ALPINE Plus
Maroela Almond



ALPINE Plus
Chobe Oak



ALPINE Plus
Safari Leadwood



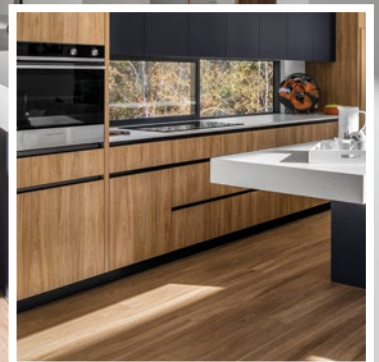
ALPINE Plus
French Oak

Stone Composite Flooring Solution

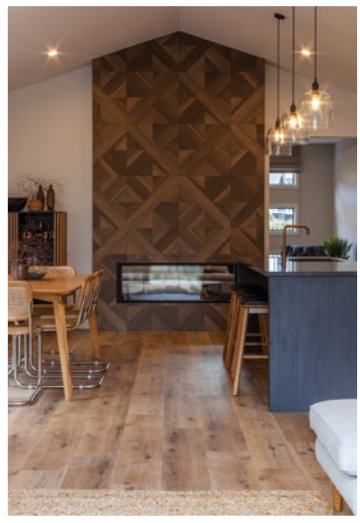
AMERICAN OAK



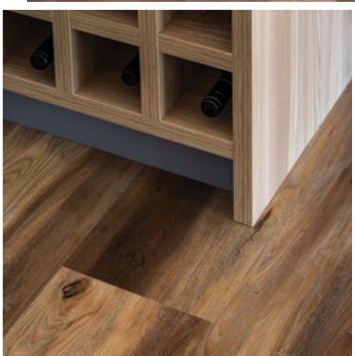
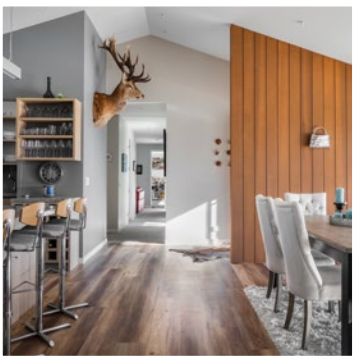
CALIFORNIAN OAK



EUROPEAN OAK



SPOTTED GUM



Stone Composite Flooring Solution

LETABA WOOD



TASMANIAN OAK



BLACKBUTT



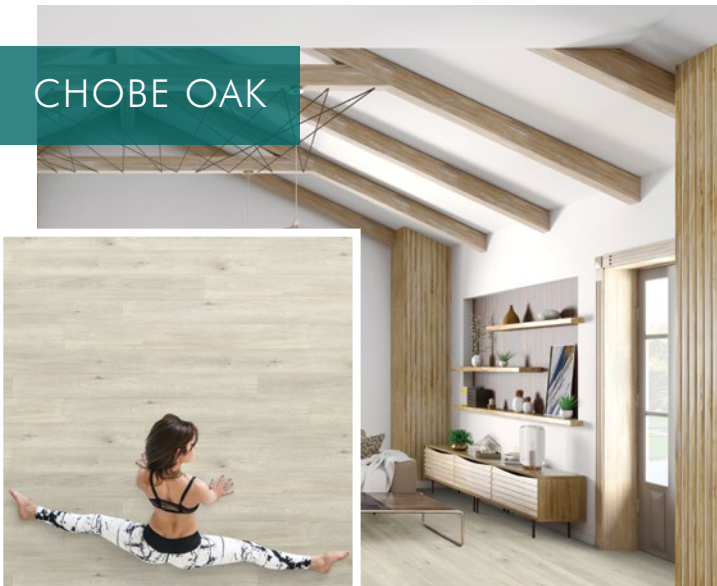
BLACK ROASTED



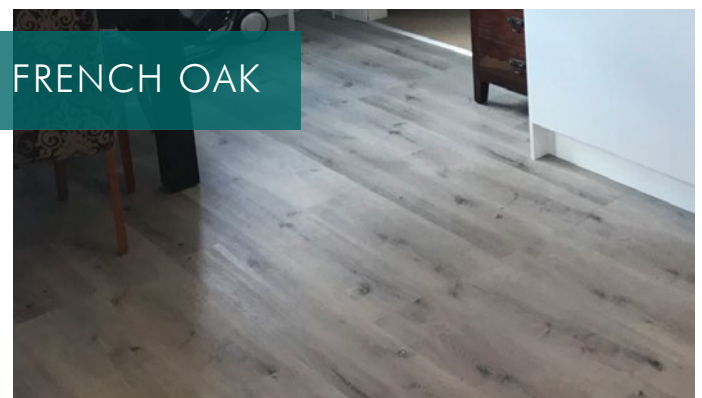
MAROELA ALMOND



CHOBE OAK



SAFARI LEADWOOD



Stone Composite Flooring Solution



Excellent
acoustic
noise-absorption
properties

BENEFITS

- Stone Composite is 4x more dimensionally stable than LVT and 10x more impact resistant than WPC
- Low VOCs (Volatile Organic Compounds)
- Water resistant and won't delaminate like natural wood laminates
- R10 Slip Resistance
Slip Coefficient .57 Pendulum Wet Test
- STC (Sound Transmission Class) = 67
- IIC (Impact Insulation Class) = $\Delta LW - 21$ db
- Higher density, more rigid and more durable than LVT and Vinyl flooring means minor subfloor imperfections will not telegraph through
- Environmentally conscious primary material of 70% Limestone resulting in with superior rigidity
- Stain resistant
- Easy to maintain and clean
- Clear and concise installation methodology
- Easy click installation
- Lower sound transmission; backed with IXPE. IXPE is in high demand as an acoustic sound absorbent material because of its exceptional qualities.

IXPE Foam Offers:

- Sound-absorption and excellent insulation effect
- Impact resistance and can be restored after strongly pressing
- With the highest grade mechanical properties
- Excellent thermal insulation, waterproof and moisture-proof
- Non-toxic, odourless, chemical/oil/acid resistant
- The 5th generation locking system has a far superior locking strength
- Orthophthalates-free, No DOP, No DINP
- FloorScore accredited production



PHYSICAL PROPERTIES

	Category	Test Method	Requirement	ALPINE	Result
Heat exposure resistance 60°C	EN 16511	ISO 23999	$\Delta W/\Delta L \leq 0.25\%$	0.03%	Exceeds requirement
	ASTM 1700	ASTM F2199	$\Delta W/\Delta L \leq 0.16\%$	0.03%	Exceeds requirement
Dimensional variation (humidity change)	EN 16511	ISO 24339	$\Delta W/\Delta L \leq 0.15\%$	$\Delta W/\Delta L \leq 0.01\%$	Exceeds requirement
Swelling after submersion in water	EN 16511	ISO 24336	$\leq 12\%$	0%	Exceeds requirement
	NALFA LF 01-2011	NALFA LF 01-2011	$\leq 12\%$	0%	Exceeds requirement
Thermal conductivity	En 14041	EN 12667	class	0.173 W/(m.k)	Complies sub-floor heating system
Thermal resistance (R value)	ASTM C518	EN 12667/ASTM C518	class	0.033 m ² ·K/W	Complies sub-floor heating system
Reaction to fire	EN 14041	EN 13051-1	class	CHF = 9.4kW/m ²	Class Bfl-S1
Fire resistance (CHF)	ASTM E648	ASTM E648/662	class	0.94 W/cm ²	Class I
Wear resistance (20Mil)	IOS 1518	ISO 1519-1	$\leq 0.015g/1000$ rev	0.008	Pass
	EN 16511	EN 13329	≥ 4000 cycles	9600	Class 34
	NALFA LF 01-2011	NALFA LF 01-2011	≥ 6000 cycles	9600	Class 4
Scratch	ISO 1518	ISO 1518-1	$\geq 2500g$	3500g	Pass
Peeling strength	EN 649	EN 431	$\geq 60N/50mm$	65	Pass
Surface bonding	NALFA LF 01-2011	EN311/NALFA LF 01-2011	≥ 1.5 N/mm ²	1.56 N/mm ²	Class 4
Static load	NALFA LF 01-2011	ASTM F970	$\geq 13.8Mpa$ (2000psi/450kg)	0.05mm - Pass	Class 4
Residual indentation	ASTM F1700	ASTM F1914	$\leq 8\%$ (140 lbs/63kg)	1.90%	Exceeds requirement
	EN 16511	EN 433/ISO 24343-1	$\leq 0.15mm$	0.03	Class 34
"Impact resistance (big ball)"	EN 16511	EN 13329	$\geq 1800mm$	≥ 1800	IC3, Class 34
	NALFA LF 01-2011	NALFA LF 01-2011	$\geq 1400mm$	≥ 1400	Class 4
"Impact resistance (small ball)"	EN 13329	EN 438	≥ 15 N	23	IC3, Class 34
	NALFA LF 01-2011	NALFA LF 01-2011	$\geq 500mm$ (19.7 in)	1000	Class 4
Slip resistance	EN 14041	EN 13893	DryCOF ≥ 0.3	0.51	Class DS
	ASTM C1028	ASTM C1028	≥ 0.5	Dry: 0.8, Wet: 0.76	Meet ADA recommendation
	ASTM C1028	D 51130	$\geq R9$	R9	Anti-slip resistance R9
Colour fastness to light	EN 13329	ISO 105-B02 Method 3a	\geq Grade 6	≥ 6	Pass
	NALFA LF 01-2011	NALFA LF 01-2011	Slight change only	Slight change only	Class 4
Resistance to staining			Group 1 and 2:	Group 1 and 2:	
	EN 16511	EN 438-2	grade 5, group 3:	grade 5, group 3:	Class 34
			grade 4	grade 4	
	ASTM F1700	ASTM F925	Slight change only	Slight change only	Pass
	NALFA LF 01-2011	NALFA LF 01-2011	Slight change only	Slight change only	Class 4
Castor Chair	ISO 10582	ISO 4918	Slight change only	Slight change only	Pass



As a responsible importer and supplier, we do not recommend installing ALPINE Plus in wet areas, such as bathrooms, ensuites, laundries, and toilets, without a waterproofing membrane underneath and only a silicone joint on the perimeter. According to B2 of the NZ Building Code, an approved compliant membrane and tiling system are required in all wet areas to pass a minimum 15-year watertightness test, ensuring your house remains dry and all wet areas are waterproof.



Heat from prolonged sun and UV exposure can cause any floating floor to move beyond performance parameters. During peak sunlight hours, the use of blinds or drapes or UV-proofed windows is recommended or the installation of external shades/awnings to protect your floor. For further information, please refer to our CARE & MAINTENANCE information on our website.





ALPINE

— plus —

QUALITY FLOORING

Now with 5G

0800 289 845

www.tilewarehouse.co.nz



Tile Warehouse – Design & selection made Easy, from the floor up!