



# PEPPA

SPICE IT UP WITH SIMPLE AND STRIKING DESIGNS

200 x 200 x 10mm CERAMIC TILES - BLACK - WHITE - NAVY - ASH - 18 DESIGNS

*Southern Cross*  
C E R A M I C S



For more options visit our website: [www.southerncrossceramics.com](http://www.southerncrossceramics.com)



# ADELPHI



ADELPHI  
Black  
(C750-01)



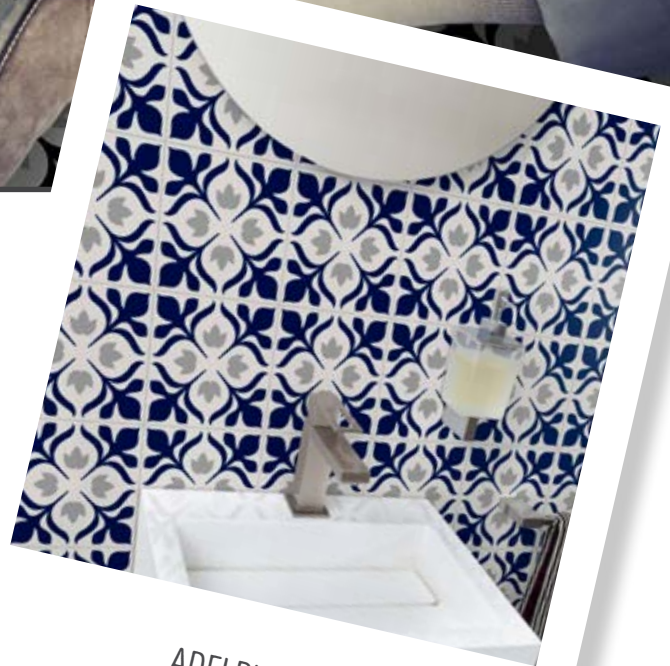
ADELPHI  
Black Light  
(C750-02)



ADELPHI  
Navy  
(C750-03)



ADELPHI  
Black Ash  
(C750-04)



ADELPHI Navy

# MERIDIAN



MERIDIAN  
Black  
(C751-01)



MERIDIAN  
Black Light  
(C751-02)



MERIDIAN  
Navy  
(C751-03)



MERIDIAN  
Black Ash  
(C751-04)







CHELSEA  
Black  
(C752-01)



CHELSEA  
Black Light  
(C752-02)



CHELSEA  
Navy  
(C752-03)



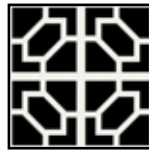
CHELSEA  
Black Ash  
(C752-04)



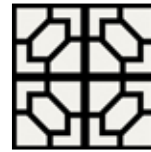
CHELSEA



TITAN Black Light



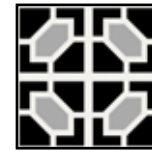
TITAN  
Black  
(C753-01)



TITAN  
Black Light  
(C753-02)



TITAN  
Navy  
(C753-03)



TITAN  
Black Ash  
(C753-04)



TITAN



BELLEVUE

BELLEVUE Black



BELLEVUE  
Black  
(C754-01)



BELLEVUE  
Black Light  
(C754-02)



BELLEVUE  
Navy  
(C754-03)



BELLEVUE  
Black Ash  
(C754-04)

OLYMPIA

OLYMPIA  
Black  
(C755-01)



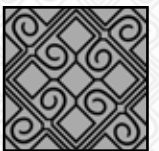
OLYMPIA  
Black Light  
(C755-02)



OLYMPIA  
Navy  
(C755-03)

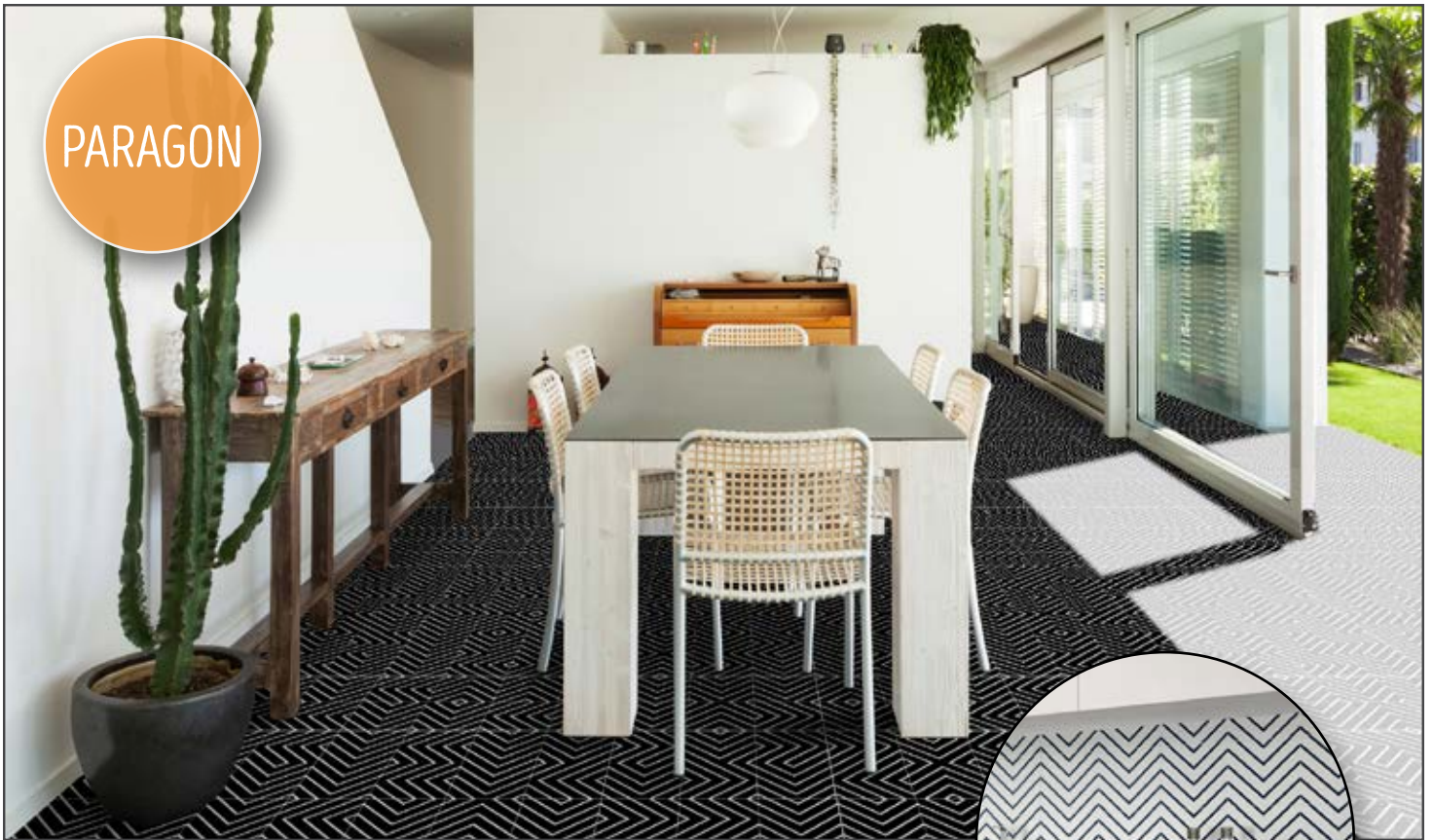


OLYMPIA  
Black Ash  
(C755-04)





PARAGON



PARAGON  
Black  
(C756-01)



PARAGON  
Black Light  
(C756-02)



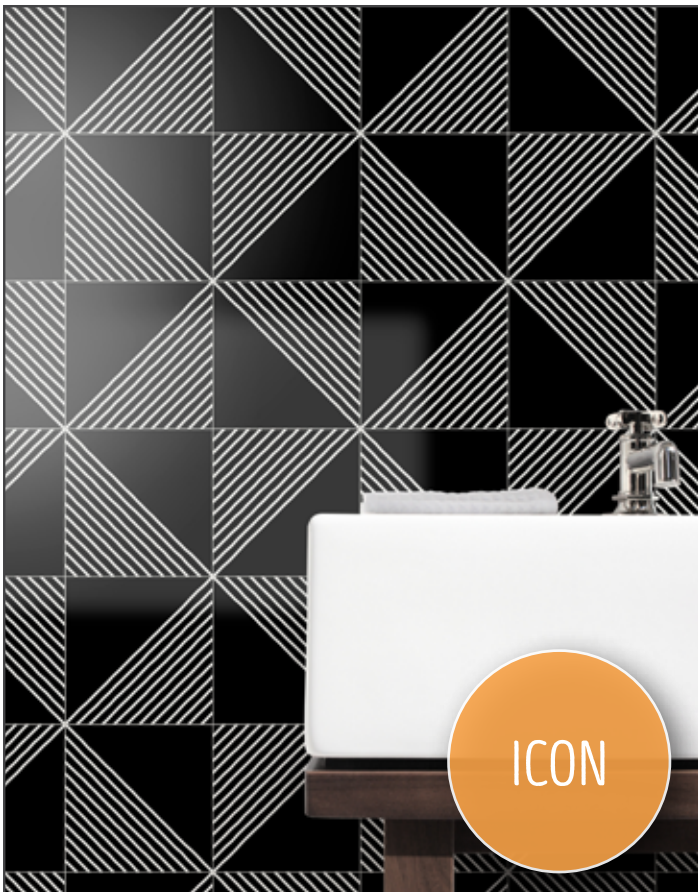
PARAGON  
Navy  
(C756-03)



PARAGON  
Black Ash  
(C756-04)



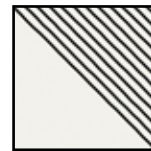
PARAGON Navy



ICON



ICON  
Black  
(C757-01)



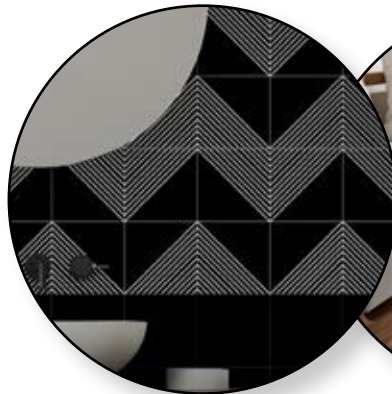
ICON  
Black Light  
(C757-02)



ICON  
Navy  
(C757-03)



ICON  
Black Ash  
(C757-04)



ICON Black



ICON Black Light

These designs have unlimited laying options and work great when combined with Magnum, our plain tile.





FORTE



FORTE  
Black  
(C758-01)



FORTE  
Black Light  
(C758-02)



FORTE  
Navy  
(C758-03)



FORTE  
Black Ash  
(C758-04)



FORTE Black



CAPITOL  
Black  
(C759-01)



CAPITOL  
Black Light  
(C759-02)



CAPITOL  
Navy  
(C759-03)

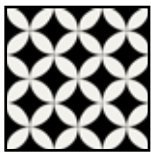


CAPITOL  
Black Ash  
(C759-04)

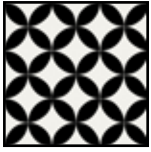


CAPITOL

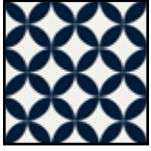




REGEN T  
Black  
(C760-01)



REGEN T  
Black Light  
(C760-02)



REGEN T  
Navy  
(C760-03)



REGEN T  
Black Ash  
(C760-04)



LOTUS  
Black  
(C761-01)



LOTUS  
Black Light  
(C761-02)



LOTUS  
Navy  
(C761-03)

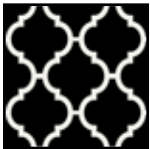


LOTUS  
Black Ash  
(C761-04)

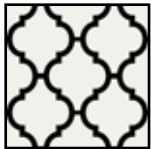




CAESAR



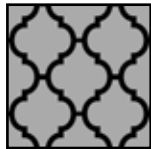
CAESAR  
Black  
(C762-01)



CAESAR  
Black Light  
(C762-02)



CAESAR  
Navy  
(C762-03)

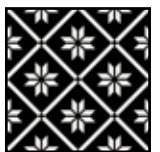


CAESAR  
Black Ash  
(C762-04)



CELESTE

CELESTE  
Black  
(C763-01)



CELESTE  
Black Light  
(C763-02)



CELESTE  
Navy  
(C763-03)



CELESTE  
Black Ash  
(C763-04)

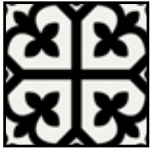




SHAMROCK  
Black  
(C764-01)



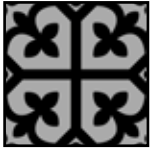
SHAMROCK  
Black Light  
(C764-02)



SHAMROCK  
Navy  
(C764-03)



SHAMROCK  
Black Ash  
(C764-04)



SHAMROCK



ACALAN  
Black  
(C765-01)



ACALAN  
Black Light  
(C765-02)



ACALAN  
Navy  
(C765-03)



ACALAN  
Black Ash  
(C765-04)



ACALAN Black Ash

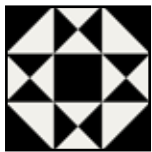


ACALAN

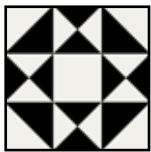




ASTOR



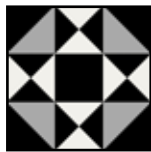
ASTOR  
Black  
(C766-01)



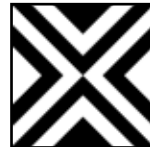
ASTOR  
Black Light  
(C766-02)



ASTOR  
Navy  
(C766-03)



ASTOR  
Black Ash  
(C766-04)



ICARUS  
Black  
(C767-01)



ICARUS  
Navy  
(C767-03)



ICARUS  
Black Ash  
(C767-04)

ICARUS







MAGNUM



MAGNUM  
Black  
(C777-01)

MAGNUM  
Salt  
(C777-02)

MAGNUM  
Navy  
(C777-03)

MAGNUM  
Ash  
(C777-04)

Peppa tiles are suitable for wall, floor, indoor and outdoor use. They have P4 Anti Slip Rating.



MAGNUM Salt & Black, ICON Black



Wall: MAGNUM Salt  
Floor: FORTE Black Light



Wall: ICARUS Black  
Floor: MAGNUM Salt



*Southern Cross*  
C E R A M I C S

Southern Cross Ceramics ABN 54 006 711 646  
28 Dunlop Road, Mulgrave, Victoria 3170.  
Tel: (03) 9561 9911 Fax: (03) 9561 9900  
Email: [info@southerncrossceramics.com](mailto:info@southerncrossceramics.com)

See the entire range displayed in a wide variety of real kitchens, bathrooms and living areas.  
Each product is shown in a large and small feature display.  
Click the product visualiser tab when you visit: [www.southerncrossceramics.com](http://www.southerncrossceramics.com)